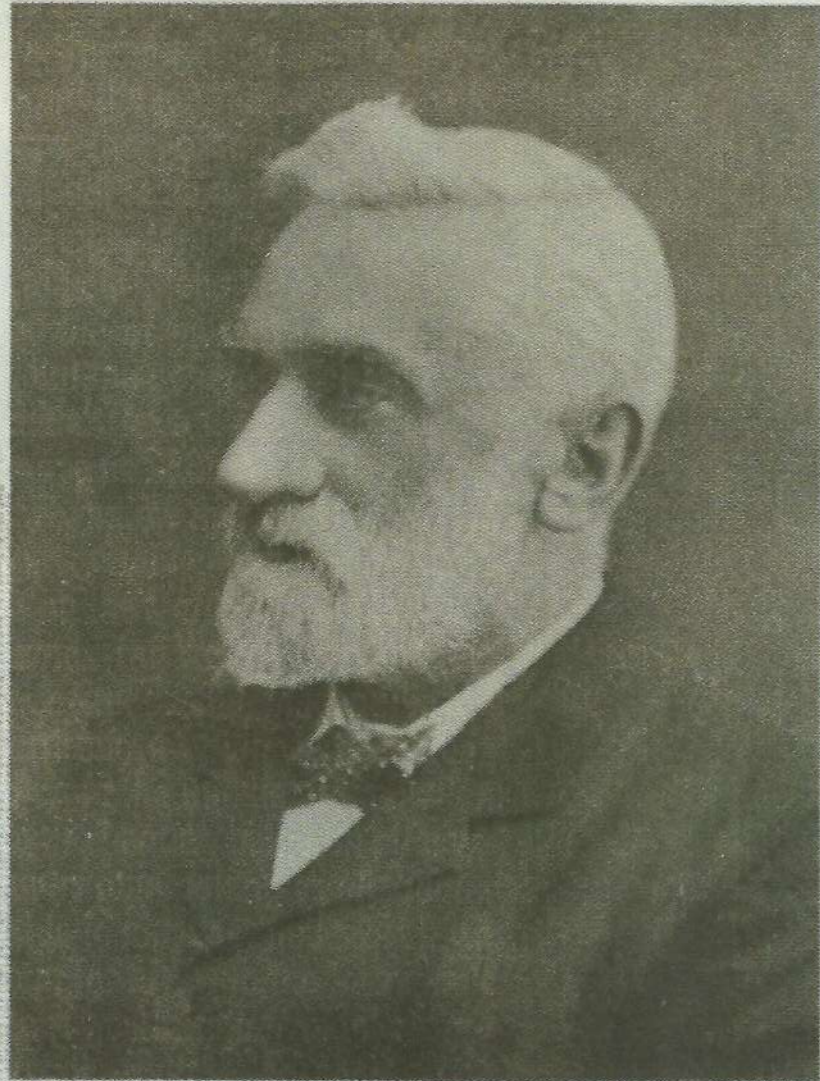


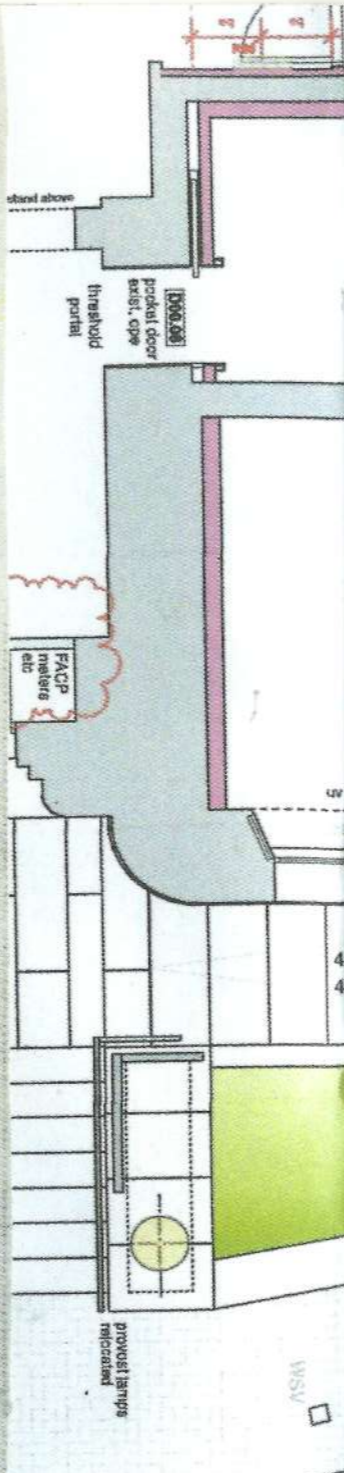


**ROBERT BRYDEN**  
Dunoon Burgh Hall Architect



**R**obert Bryden was born in Glasgow in 1841. He lived and worked in the city most of his life, but had family connections with Dunoon from boyhood. He attended Dunoon's Arthur's Academy and then married Elizabeth Robertson, the daughter of Alexander Robertson, a successful Glasgow Ironfounder who had retired to the Dunoon area.

These connections undoubtedly secured his position as architect for the new Burgh Hall in 1872. The Hall was Bryden's first major commission, received whilst working as an apprentice architect to Clarke and Bell, a well established Glasgow based practice.



**T**he three storey Dunoon Burgh Hall is built from local green schist stone. When it opened it towered over the growing town. It was described as having a "...grand tiled interior, stained glass windows, sweeping staircase"

# THE DUNOON BURGH HALL

GYLL STREET

Refer to calculations L(2)-1000  
**6.0 SANITARY PROVISION**  
 Refer to L(7)4/100 for sar

Stair 1  
 Stair 2  
 Stair 3  
 Stair 4  
 Stair 5  
 Stair 6

L(2) 01  
 L(2) 05  
 L(2) 08-11  
 L(2) 12-14  
 L(2) 15-20

Edge Protection - protective barriers to be minimum 1100mm high with all gaps between balustrades to be less than 100mm wide  
 All low-level glazing (under 800mm from FFL) to be toughened glass to BS6262/206

**5. ENERGY**

Refer to calculations L(2)-1000  
**6.0 SANITARY PROVISION**  
 Refer to L(7)4/100 for sar

Stair 1  
 Stair 2  
 Stair 3  
 Stair 4  
 Stair 5  
 Stair 6

L(2) 01  
 L(2) 05  
 L(2) 08-11  
 L(2) 12-14  
 L(2) 15-20

Edge Protection - protective barriers to be minimum 1100mm high with all gaps between balustrades to be less than 100mm wide  
 All low-level glazing (under 800mm from FFL) to be toughened glass to BS6262/206

**5. ENERGY**



PARK

SPEL UK

015

# INTRO

1 STAINED GLASS

2 GARGOYLES

3 ROBERT STEWART MURAL

4 STAIRS

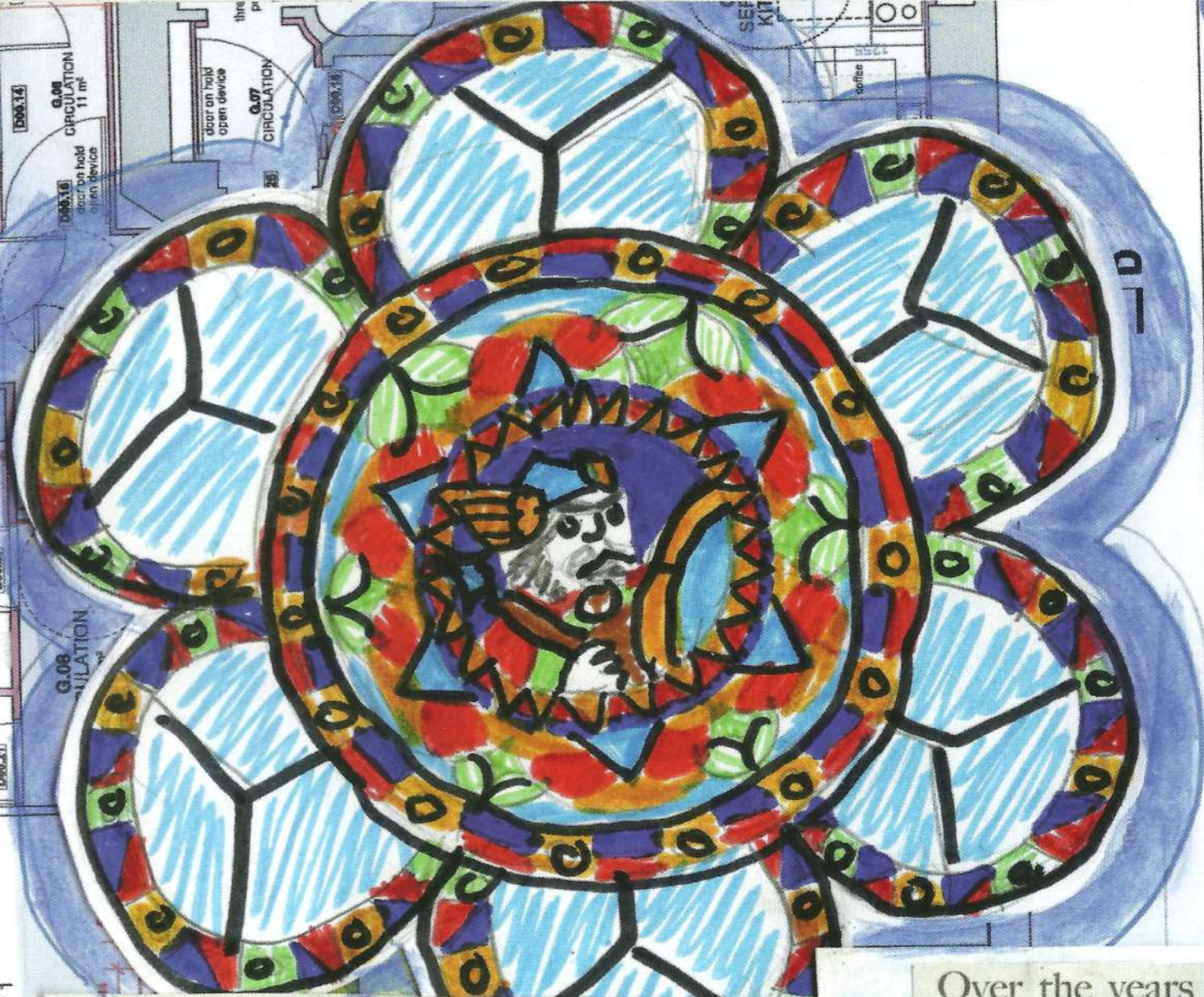
5 CORNICINGS

- existing floor raised
- existing floor lowered
- new stud partitions
- new stone
- new concrete
- new brick



G.16 WORKSHOP 1  
16 m<sup>2</sup>

GARDEN TO BE  
LANDSCAPED BY  
OTHERS



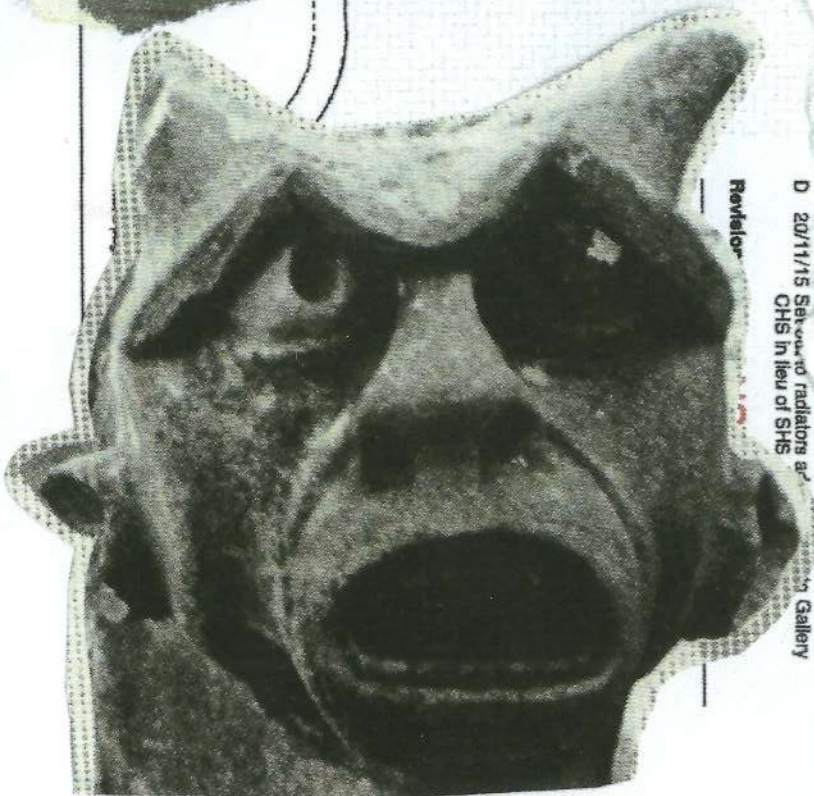
The stained glass window in the main hall was created by James Ballantine (1807-1877). Ballantine was a prominent stained glass maker of the time. He was awarded the contract to paint some of the windows in the House of Lords following a public competition. James Ballantine was the author of a series of books on the history and techniques of stained glass manufacture, notably a book titled *A Treatise on Painted Glass*.

Over the years our stained glass Viking had lost his face. It turns out that either the glass was painted on the wrong side - hence degraded by the weather - or it had originally not been fired at a high enough temperature.

During the refurbishment our stained glass Viking was restored to his original condition.

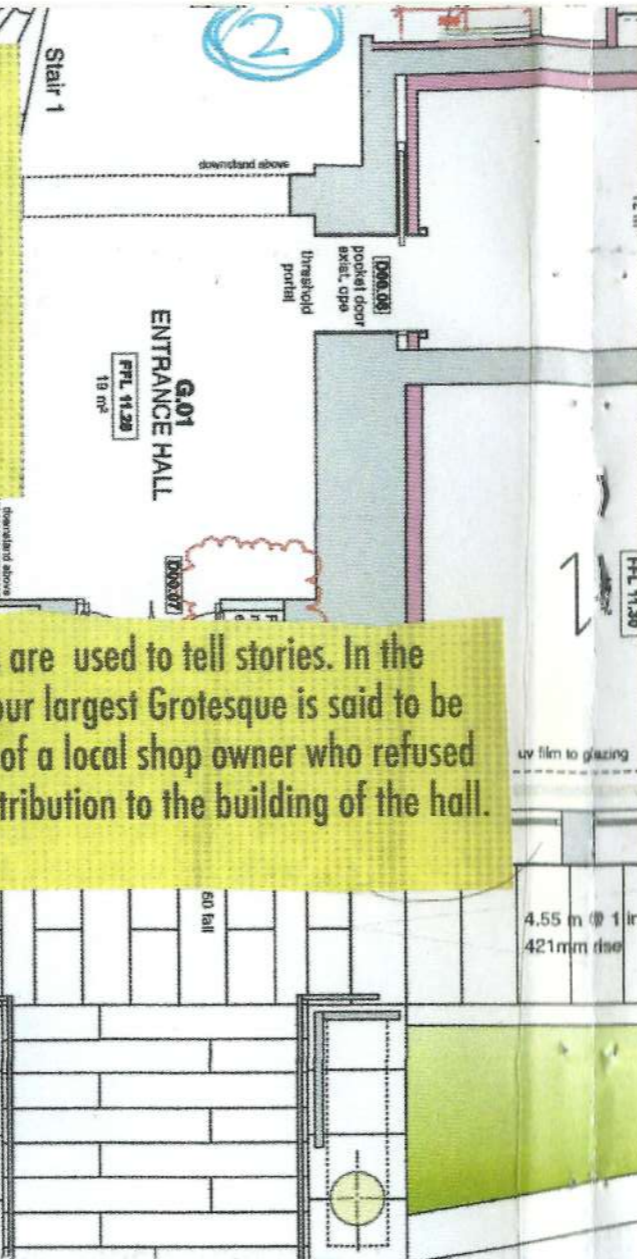
Look up at Dunoon Burgh Hall and you might catch the eye of our famous Gargoyles and Grotesques. The hall has 4 of these mythical stone creatures. They dwell around the door and on the external facade of the building.

Sometimes the carvings are used to tell stories. In the case of the Burgh Hall our largest Grotesque is said to be glaring in the direction of a local shop owner who refused to make a financial contribution to the building of the hall. Watch out!!



The features on the exterior of the building make it even more special as the longer you look the more you will notice.

Refer to calculations L(2)-1000  
SANITARY PROVISION  
7.74.1000



This mural by Robert Stewart is made up of 800 or so tiles.

It was moved from the walls of Glasgow school of art before it was demolished and moved to Dunoon Burgh hall.

Refer to calculations L(2)-1000  
SANITARY PROVISION  
7.74.1000

ARGYLL STREET

Do not scale from drawings. Dimensions only. By the contractor and any subject prior to works being carried out.

1. NOT TO SCALE  
2. LISTEN TO THE DRAWING  
3. BE SURE OF THE STANDARD  
4. ON THE DRAWING  
5. BE SURE OF THE STANDARD  
6. ON THE DRAWING  
7. BE SURE OF THE STANDARD  
8. ON THE DRAWING  
9. BE SURE OF THE STANDARD  
10. ON THE DRAWING

“ grand tiled interior, stained glass windows, sweeping staircase ”

The carefully handcarved wooden stair rails leading to the main hall

I was personally drawn to the attention to detail and intricate shapes created on the halls cornicing as they were very organic and ornate.

The plasterwork features tools. These are commonly used as allegorical symbols in Freemasonry. The Square and Compasses are traditional symbols of the Masonic Order. The Set Square symbolises that we "square our actions with all mankind"

